

**GRILL LIGHTING  
INSTRUCTIONS:**

1. Read and follow all warnings and instructions in priority printed before lighting.
2. Open lid before lighting burners.
3. Make sure all control knobs are in the "OFF" position.
4. Push and turn the Gas Right knob to HIGH position 3-5 seconds to light burner.



5. If ignition does not occur in 5 seconds, turn the Gas Right knob to "OFF" and 7 seconds to allow gas to dissipate and repeat the lighting process.
6. To light the other burners, push and turn control knob to the "OFF" position and follow step 4.
7. Repeat the process to manual for lighting burners.
8. To turn off, turn each control knob clockwise until it clicks to "OFF" position.

**CAUTION:**  
Flames can become hot during use.  
**NOTE:**  
TURN OFF GAS SUPPLY when  
absent for 15 minutes.



**WARNING:**  
When cooking with  
hood closed, turn  
burners to low position.

# Harvest Grove Outdoor Kitchen

## BBQ Grill Instruction Manual



Scan our QR code  
to watch our online  
instruction videos or  
go to [youtube.com/  
barkmanconcrete](https://youtube.com/barkmanconcrete)

For any issues on Sunstone steel components  
or warranty claims, please call Texas BBQ  
Wholesalers at 888-934-9449 or email them at  
[service@sunstonemetalproducts.com](mailto:service@sunstonemetalproducts.com).

## Materials Included:

12" standard quarry stone - 57 pieces  
 8" standard quarry stone -3 pieces  
 4" standard quarry stone - 9 pieces  
 4" x 12" x 6" quarry stone - 6 pieces  
 4" x 8" x 6 1/8" quarry stone -9 pieces  
 4" x 8" x 2 1/8" quarry stone - 8 pieces  
 4-piece ebony accent band  
 3-piece ebony countertop  
 4 burner grill 34in LR (liquid propane ready)  
 stainless steel vent box  
 tank and drawer frame  
 double door tank holder and dual drawers  
 concrete screws with drill & driver bits  
 Sunstone manual for grill  
 plastic shims  
 1 tube of landscape glue  
 gloves  
 instruction guide  
 installation video  
 landscape design plan

## Notes:

If installing your BBQ grill on an unstructured base, please ensure to follow these steps:

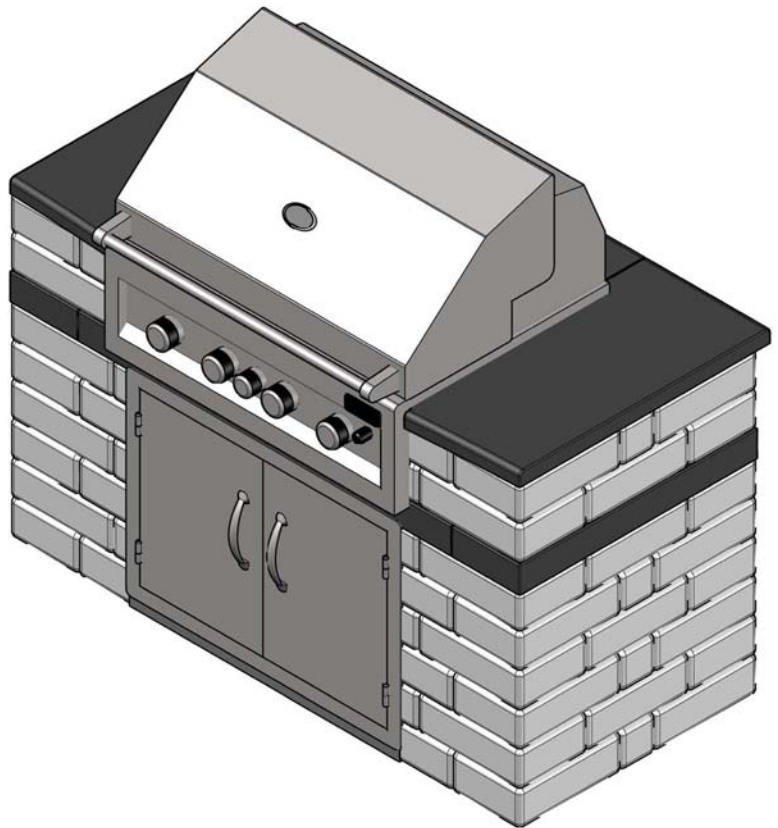
- Excavate area approx. 9" below grade
- Excavate approx. 6" larger than your actual kit dimensions to ensure a stable base.
- Fill with ¾" down limestone and compact firmly
- Level out ½" of sand and install kit as per the instruction guide.
- If you are installing on a solid base such as an existing patio and/or base prep is not necessary, then you can proceed to the first step.

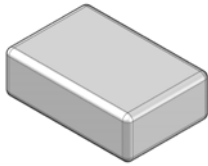
These instructions may not refer to all base conditions. Base prep will greatly depend on existing ground conditions and may require alternate techniques.

For the use of propane or natural gas with this product, consult your local building code and/or bylaws for regulations. Natural gas conversion kit is available for purchase separately.

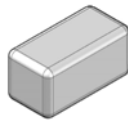
## Other Items Needed:

drill  
 caulking gun  
 measuring tape/ruler

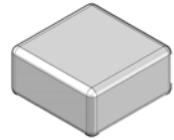




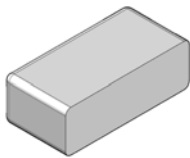
12" standard quarry stone



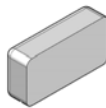
4" standard quarry stone



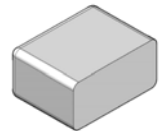
8" standard quarry stone



4" x 12" x 6" quarry stone



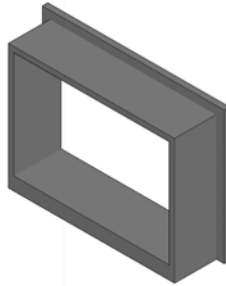
4" x 8" x 2  $\frac{1}{8}$ " quarry stone



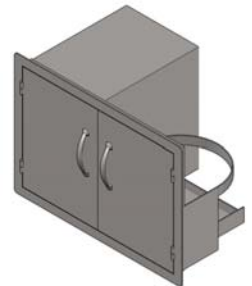
4" x 8" x 6  $\frac{1}{8}$ " quarry stone



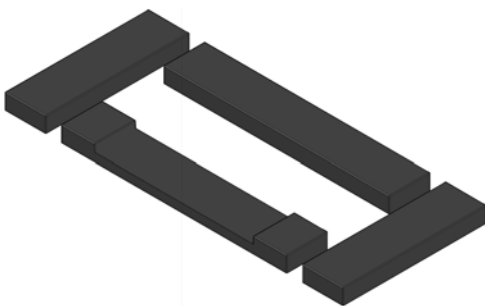
stainless steel vent box



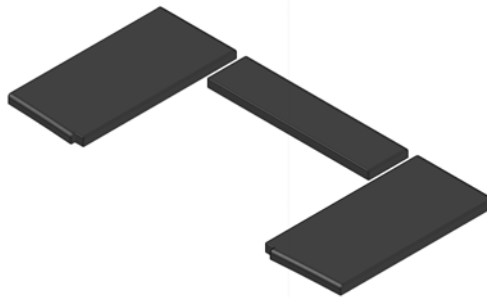
tank and drawer frame



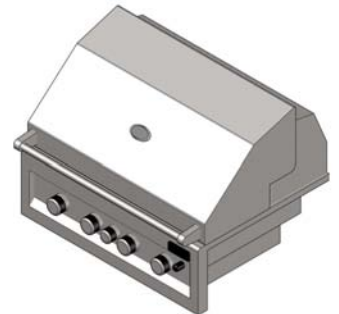
double door tank holder and dual drawers



4-piece ebony accent band



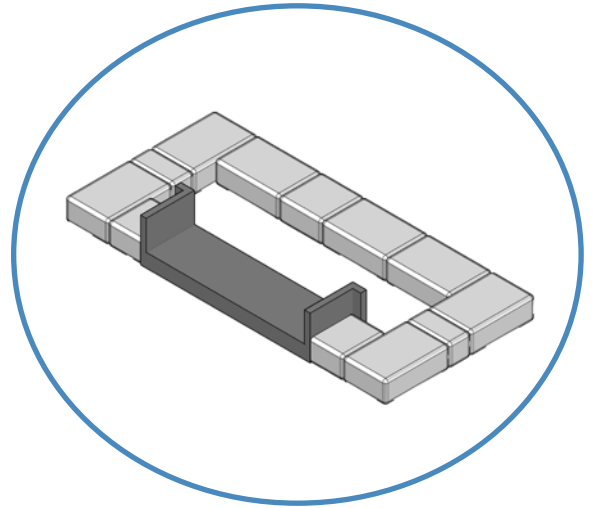
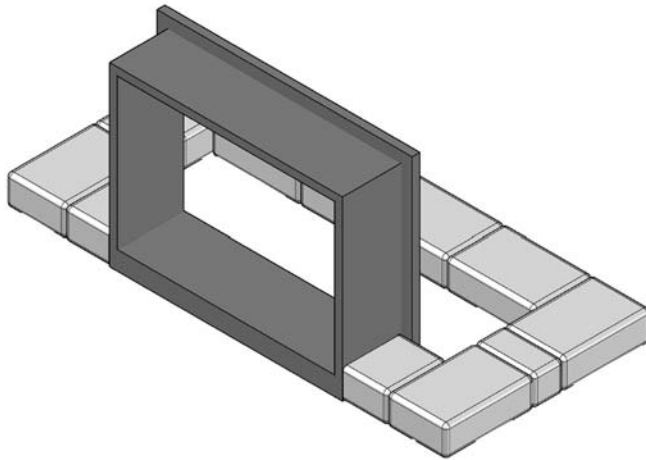
3-piece ebony countertop



4 burner grill 34 IR

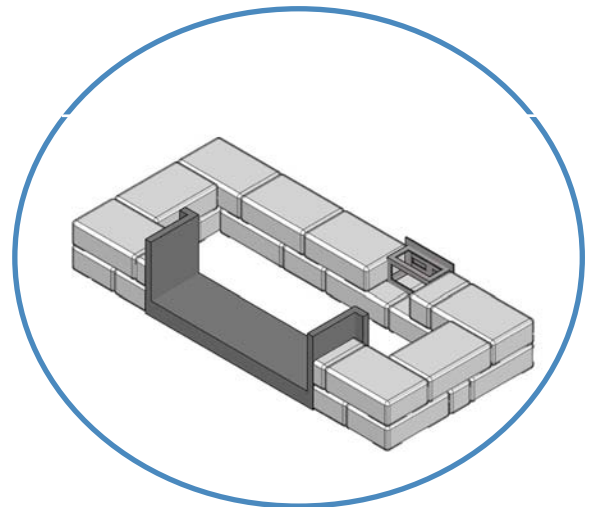
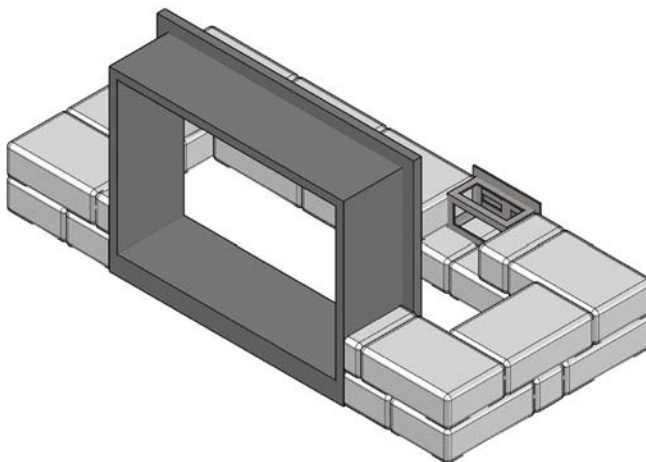
**Note: Certain steps indicate the use of landscape glue. This is for added stability but it's optional and at the discretion of the user.**

#### STEP 1



Lay down the stone pattern shown using 12", 8", 4" standard and 4"x8"x6<sup>1</sup>/<sub>8</sub>" pieces along with the *tank and drawer frame*. Glue the cut ends of the blocks to the *tank and drawer frame* for this and future layers. Measure at every step to ensure the remaining space between the stone and top of frame is 24" minus 4" for every layer of stone. **Check that stones are level at every step. Use included shims for adjustments.**

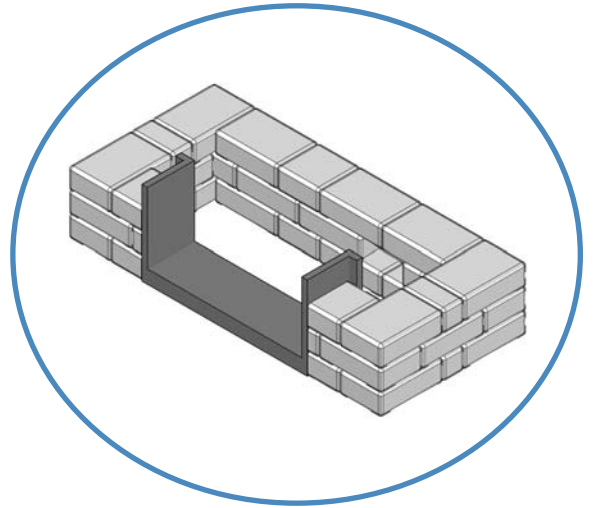
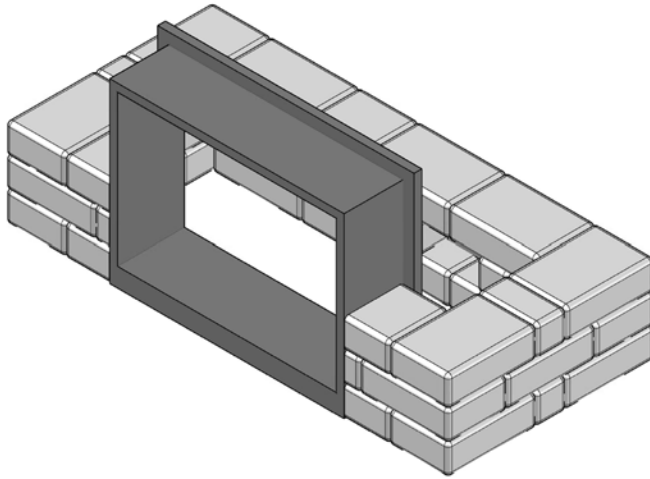
#### STEP 2



Lay down the stone pattern shown using 12", 4" standard and 4"x8"x2<sup>1</sup>/<sub>8</sub>" pieces along with the *vent box*. Glue this layer down to the 1<sup>st</sup> layer.

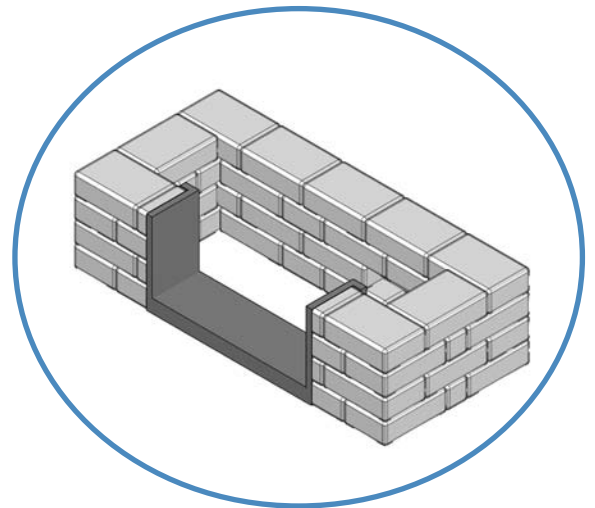
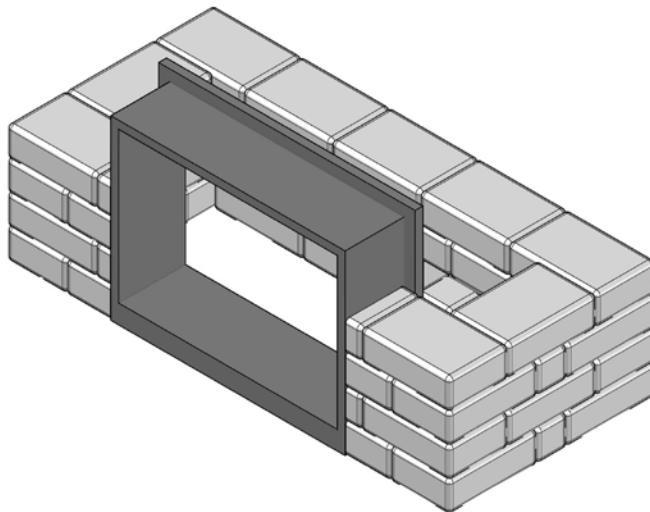


## STEP 3



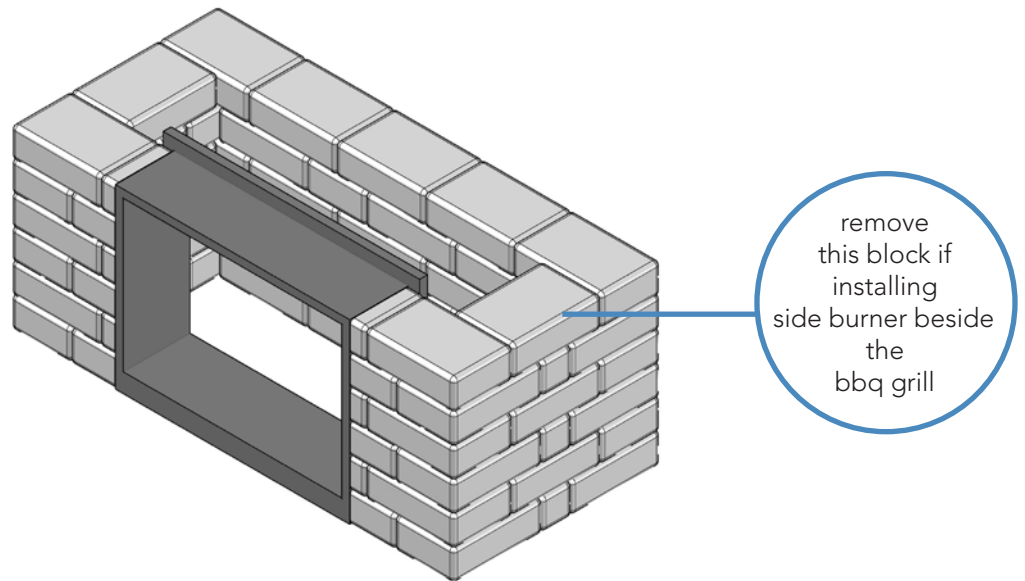
Repeat the pattern from Step 1.

## STEP 4



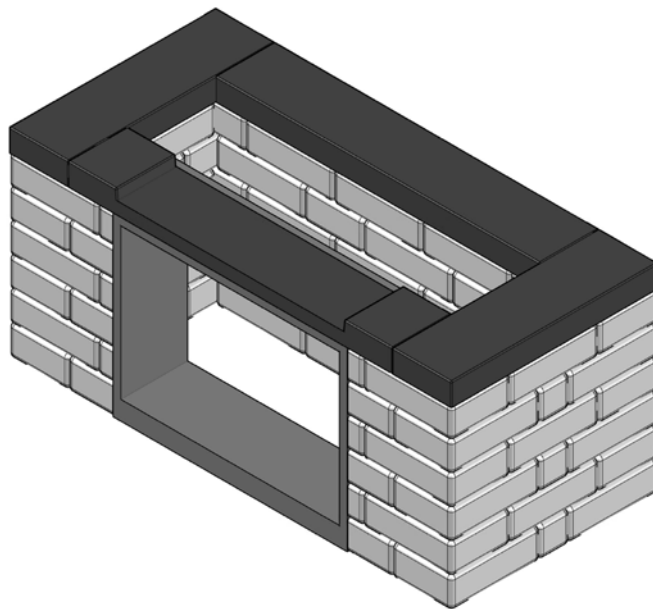
Lay down the stone pattern shown using 12" standard and 4"x8"x2<sup>1</sup>/<sub>8</sub>" pieces.

## STEP 5



Repeat patterns from Steps 3 & 4. Make sure this layer is flush with the top of the frame.  
***If installing with the side burner, do so on the right-hand side of the BBQ grill.***

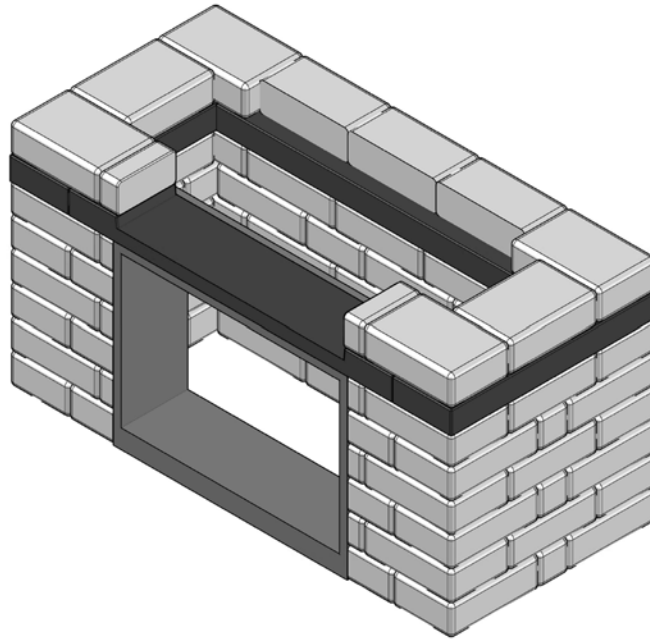
## STEP 6



Lay down the 4-piece accent band as shown. Make sure all 4 pieces are level. Glue this down to the tank and drawer frame and quarry stone below.

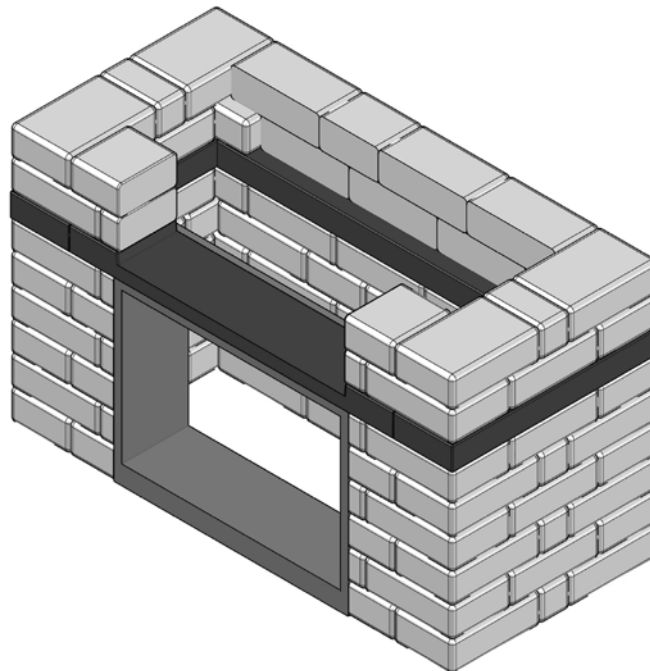


STEP 7



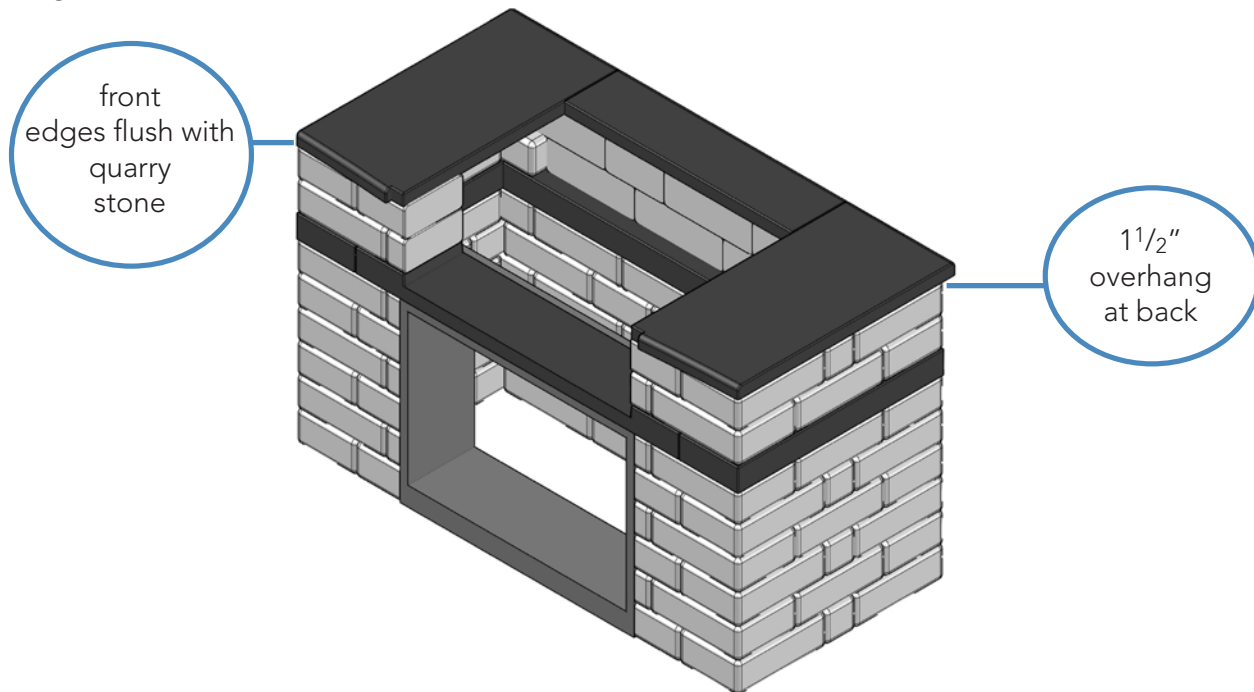
Lay down the stone pattern shown using 12" standard, 4"x12"x6" and 4"x8"x2<sup>1</sup>/<sub>8</sub>" pieces.

STEP 8



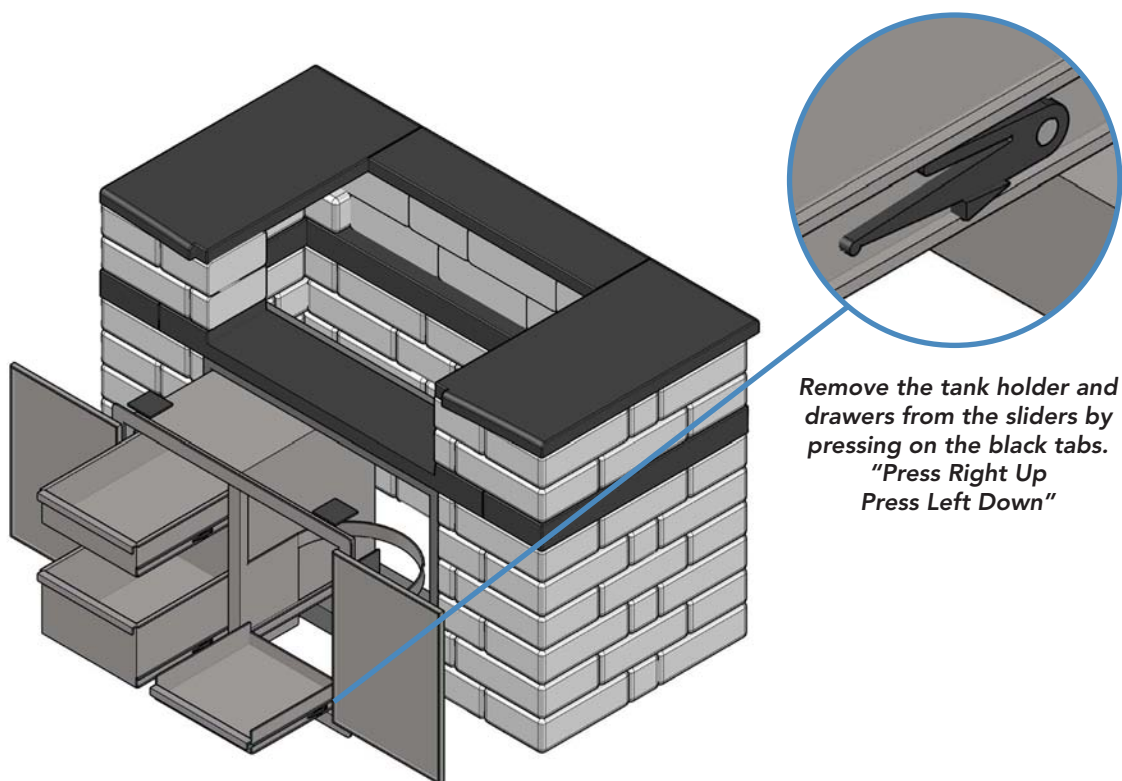
Lay down the stone pattern shown using 12", 4" standard, 4"x12"x6", and 4"x8"x6<sup>1</sup>/<sub>8</sub>" pieces. Make sure that all pieces on this layer are level to receive the countertop.

## STEP 9



Lay down the 3-piece ebony countertop as shown. Make sure all 3 pieces are level. Glue this down to the quarry stone below.

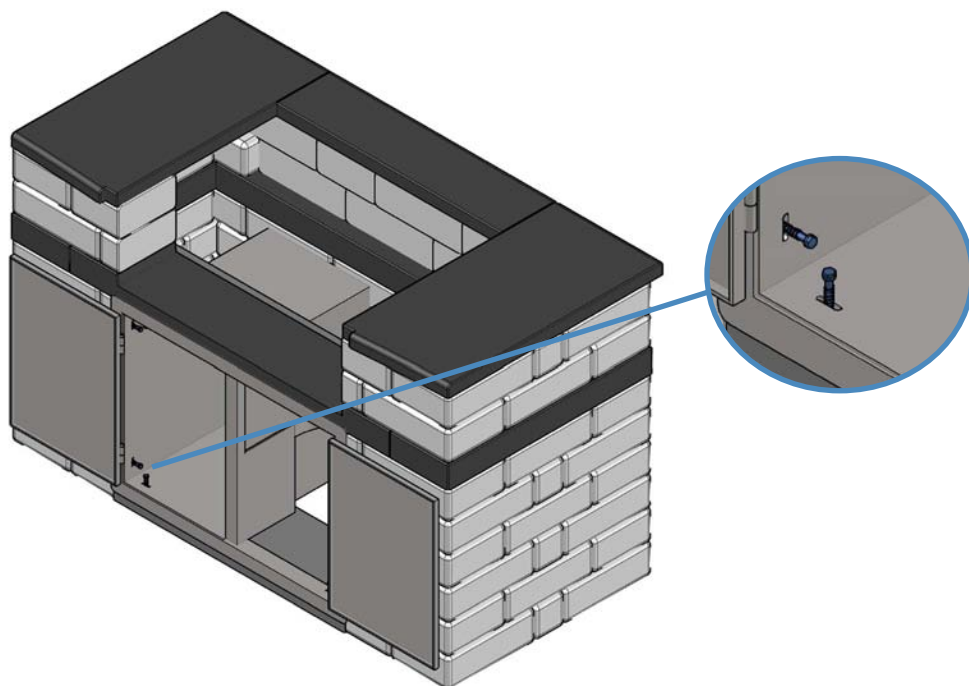
## STEP 10



Insert the double door tank holder and dual drawers into the tank and drawer frame. Use the included shims to ensure it fits snug and remains square.

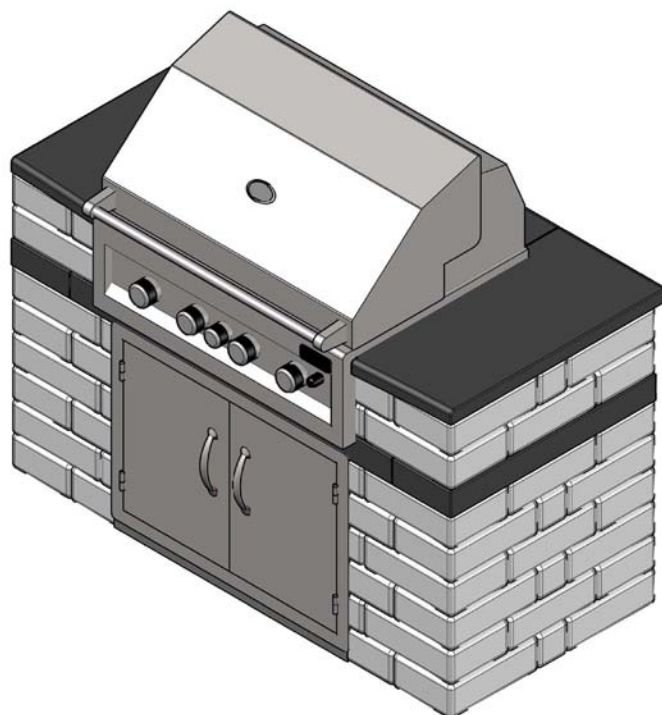
10 Remove the tank holder and drawers from the sliders by pressing on the black tabs.

## STEP 11



Pre-drill holes into the *tank and drawer frame* through openings in the *double door tank holder and dual drawers* with the drill bit provided. Fasten in place with the provided concrete screws (do not overtighten). Reinsert the drawers and tank holders thereafter.

## STEP 12



Place the *4-burner grill 34in IR* into the space provided.

**Refer to the *Sunstone* manual included with the 4-burner grill 34in IR for proper use and installation.**

## Harvest Grove Outdoor Kitchen Kits

### BARKMAN CONCRETE LIMITED

Steinbach Office  
152 Brandt Street, Steinbach, MB R5G 0R2  
T 204 326 3445 or 1 800 461 2278  
F 204 326 5915  
steinbach@barkmanconcrete.com

Winnipeg Office  
909 Gateway Road, Winnipeg, MB R2K 3L1  
T 204 667 3310 or 1 800 342 2879  
F 204 663 4854  
winnipeg@barkmanconcrete.com

Calgary Office  
813 McCool Street, Box 1136,  
Crossfield, AB T0M 0S0  
T 403 946 4630 F 403 946 4631  
calgary@barkmanconcrete.com

Vancouver Office  
2104-290 Newport Drive,  
Port Moody, BC V3H 5N2  
T 778 689 7670 or 1 800 461 2278  
F 604 949 0321  
vancouver@barkmanconcrete.com

### DISTRIBUTION CENTERS

barkman Saskatoon  
3550 Idylwyld Drive North, Saskatoon, SK  
T 1 306 549 7544

barkman Kelowna  
1904 Old Okanagan Highway, Westbank, BC  
T 1 204 346 9490

barkman Surrey  
8167 132nd Street, Surrey, BC  
T 1 204 346 9490

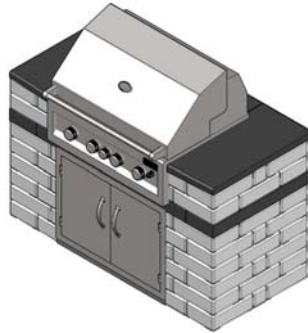
Follow Barkman Concrete  
on facebook, twitter  
@barkmanconcrete and  
visit our YouTube channel.



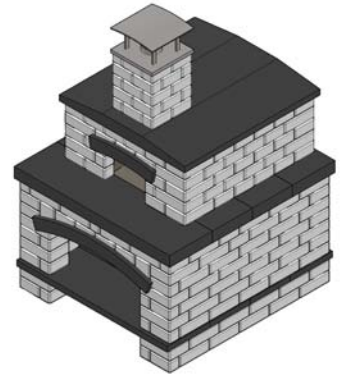
Made in Canada.

**barkman**<sup>TM</sup>  
creating concrete solutions

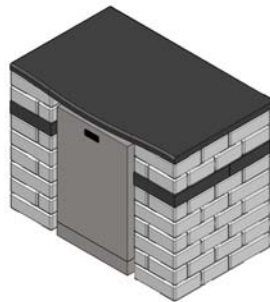
[www.barkmanconcrete.com](http://www.barkmanconcrete.com)



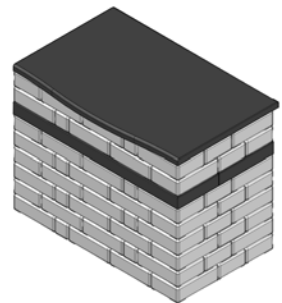
BBQ Grill



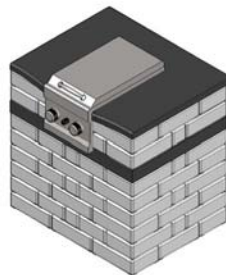
Pizza Oven



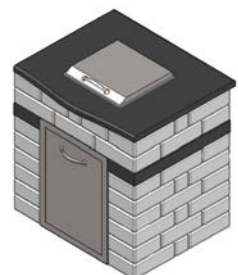
Bar with Fridge



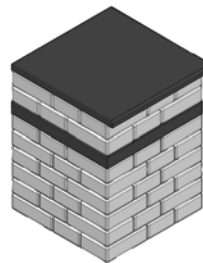
Bar Counter



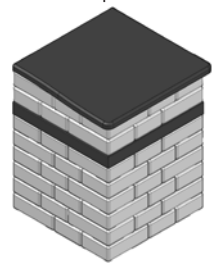
Side Burner



Prep Station with Waste  
Receptacle



Corner Unit



End Units (Left and Right)